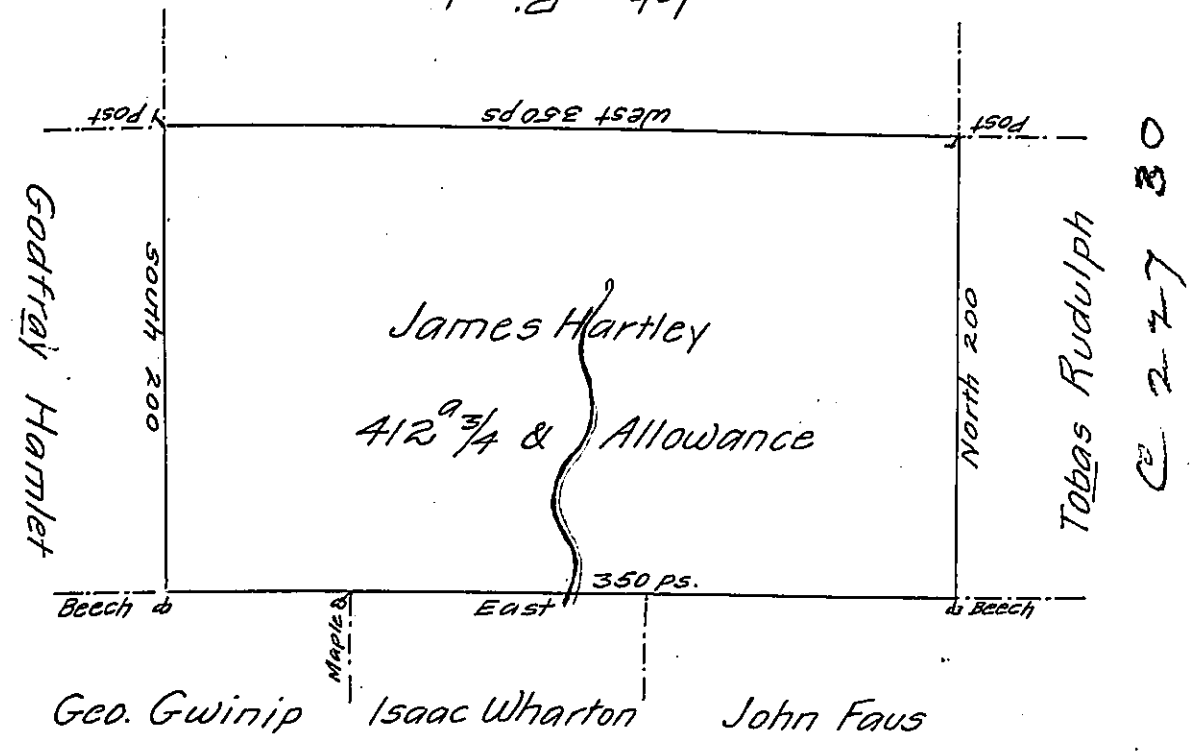


C 227-41

John Rinck



A Draught of a Tract of Land Called _____ Situate

on the Waters of Snake Creek, Adjoining Land of Isaac Wharton, and others, in Stoke Township Northumberland County, Surveyed on the 25th day of Sepr. 1786 for James Hartley by Virtue of his Warrant bearing date the 18th day of July 1786 Containing four Hundred and Twelve Acres, and $\frac{3}{4}$ and allowance of Six p Cent for Roads &c.

by

To John Lukens Esqr.	} Wm. Gray D.S
Surveyor Genl.	
	now Luzerne County

IN TESTIMONY that the above is a copy of the original remaining on file in the Department of Internal Affairs of Pennsylvania, made conformably to an Act of Assembly approved the 16th day of February, 1833, I have hereunto set my Hand and caused the Seal of said Department to be affixed at Harrisburg, this fifth day of June 1905

Joseph P. Brown
Secretary of Internal Affairs.